

***Periphyllus hirticornis* (Walker, 1848) (Hemiptera, Aphididae) on Bredon Hill, Worcestershire**

Paul F. Whitehead
Moor Leys, Little Comberton, Pershore, Worcestershire, WR10 3EH. Email: paul@thewhiteheads.eu

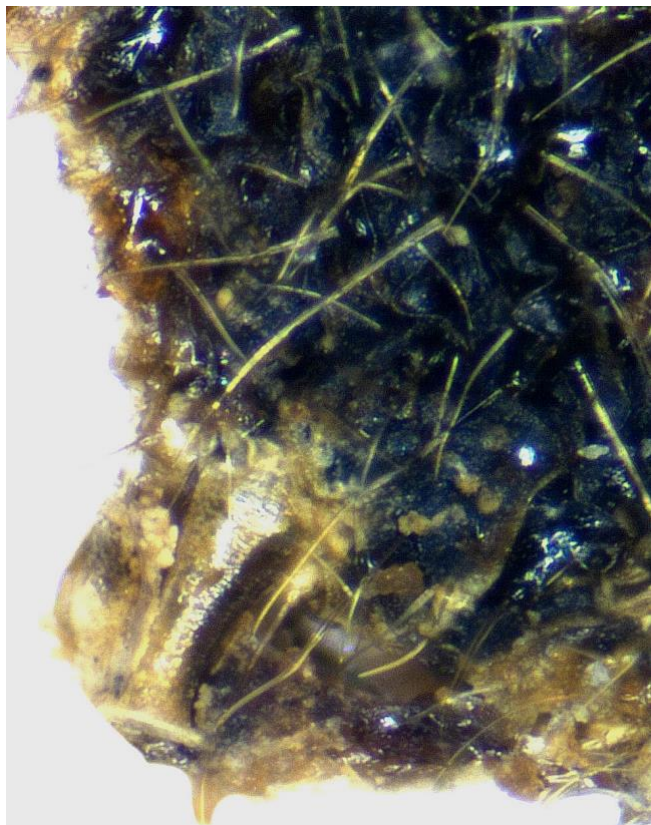
Introduction

During October 2019 an aphid beaten from a Field Maple *Acer campestre* L. at Overbury Park, Worcestershire, appeared to be a species of *Periphyllus* van der Hoeven.

Discussion

On 27 October 2019 a single distinctive apterous aphid was beaten from a decrepit senile Field Maple at Overbury Park, Bredon Hill, Worcestershire (52°04'N 2°06'W VC37 SO93). It was uniformly greenish-yellow with red eyes and was conspicuously invested with long hairs that extended also to the legs and antennae. It was suggestive of *Periphyllus* sp., a genus of about 40 species living almost exclusively on Holarctic maples.

The internet supports a number of instructive sites with well-illustrated descriptions of aphids and they demonstrated that the aphid was *Periphyllus hirticornis* (Walker, 1848) monophagous on Field Maple in Europe (Blackman & Eastop, 1994). Dr Roger Blackman (*in litt.*, 29 November 2019), a foremost specialist on Aphididae, did not object to this identification, pointing out that the swollen hind tibiae confirmed the specimen as oviparous.



01. Left siphunculus of *Periphyllus hirticornis*, Overbury Park, Worcestershire, 27 October 2019. The darkening of the integument is a post-mortem effect.

Figure 01 illustrates the distinctive siphunculi of *P. hirticornis* which amongst the British species are comparatively elongate and clearly everted distally. The only remaining observation to make is that of the potential scarcity of this species which despite extensive study of Field Maples on Bredon Hill has not been observed previously by the writer. Like *Stomaphis graffii* (Whitehead, 1995) *P. hirticornis* may well provide a further interesting link in the developmental history of the entomofauna of Bredon Hill.

References

Blackman, R.L. & Eastop, V.F., 1994. *Aphids on the world's trees*. pp. i-viii, 1-987. CAB International, Wallingford.
Whitehead, P.F., 1995. *Stomaphis graffii* Cholodkovsky (Homoptera: Aphididae: Lachnidae) new to the British fauna. *Entomologist's Gazette* **46**: 161-162.