

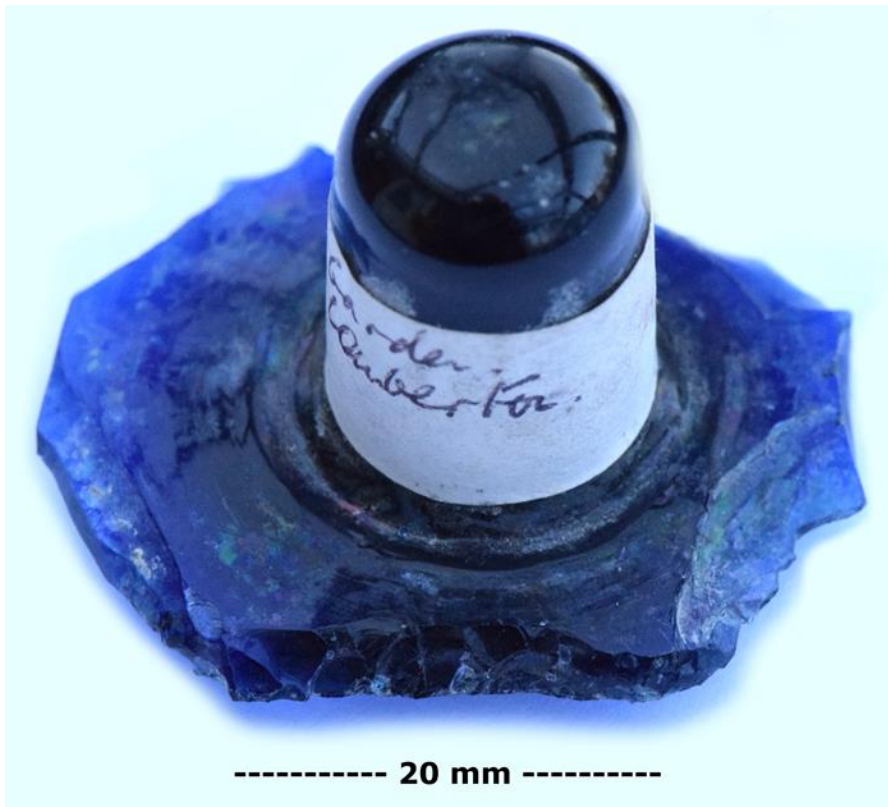
A post-medieval Victorian blue glass hand tool from Little Comberton, Worcestershire.

Paul F. Whitehead
Moor Leys, Little Comberton, Pershore, Worcestershire, WR10 3EH.
Email: paul@thewhiteheads.eu
All images © Paul Whitehead.

A previous contribution (Whitehead, 2009) demonstrated that knapped glass had been used as hand tools in south Worcestershire for 2000 years, and that its known post-medieval usage occupied a time period from about AD1700-AD1800.

Between 1970 and 1995 I was able to assemble artefacts and environmental evidence from within the curtilage of a late Georgian country house in Little Comberton formerly known as The Old Post Office and situated at SO96654295. A significant amount of data was assembled including evidence for human activity and sedimentology extending back to about AD1000.

A domed blue glass stopper with a lightly ground shank was found during April 1977 and it was observed that the edges of it had been trimmed all around and retouched in a variety of ways. One edge had been distinctively straightened and retouched at an angle of about 45° to create a scraper (01 and 02).



01. Post-medieval Victorian retouched blue glass tool, Little Comberton, Worcestershire, April 1977.



02. Retouched edge detail of post-medieval Victorian blue glass tool, Little Comberton, Worcestershire, April 1977.

This is a significant finding which moves the use of glass hand tools in rural Worcestershire forward by some 70 years to at least AD1870 and therefore into the reign of Queen Victoria. It is especially interesting to observe that the owners of a not insignificant property would have been involved with the fabrication of such a basic hand tool on part of a comparatively sophisticated apothecary's bottle. The shank of the blue glass stopper would have provided an admirable tool handle.

Reference

Whitehead, P.F., 2009. Knapped glass from the Bredon Hill area of Worcestershire. *Worcestershire Record* 26:28-30.

Images

01. Post-medieval Victorian retouched blue glass tool, Little Comberton, Worcestershire, April 1977.

02. Retouched edge detail of post-medieval Victorian retouched blue glass tool