

An unusual bumblebee

Geoff Trevis.

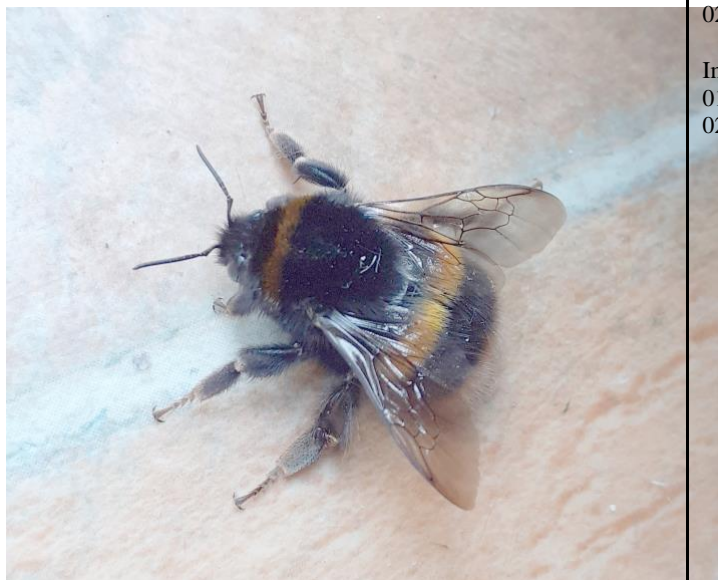
In early May 2020 a photograph of a bumblebee was submitted to Worcestershire Biological Records Centre (WBRC) for identification. As it did not fit any of the known species in Worcestershire it was forwarded to me. It was certainly something of a puzzle. Whilst the abdomen showed the typical pattern of Buff-tailed Bumblebee *Bombus terrestris* and White-tailed Bumblebee *B. lucorum* the thorax was entirely black! This did not fit any illustrations I could find in the literature or on websites – I was left baffled so I forwarded the pictures to Mike Edwards who, in turn, sent them to Paul Williams. Paul’s response was “99% confident that this is a *Bombus terrestris* queen - short hair, golden yellow band on T2, buff tail on T5. Dark individuals sometimes lack the yellow band at the anterior of the thoracic dorsum. Nice bee!”

I have never encountered this variation before and, as far as I am aware, nothing similar has been referred to WBRC.

My thanks to Mike Edwards and Paul Williams for their help.



02. Unusual bumblebee. Wendy Lamour.



01. Unusual bumblebee. Wendy Lamour.

Images.

01. Unusual bumblebee. Wendy Lamour.

02. Unusual bumblebee. Wendy Lamour.