

Records of note from Worcestershire, 2015-16.

Kevin McGee. Gardeners Cottage, Shakenhurst, Nr Kidderminster, Worcestershire. DY14 9AR

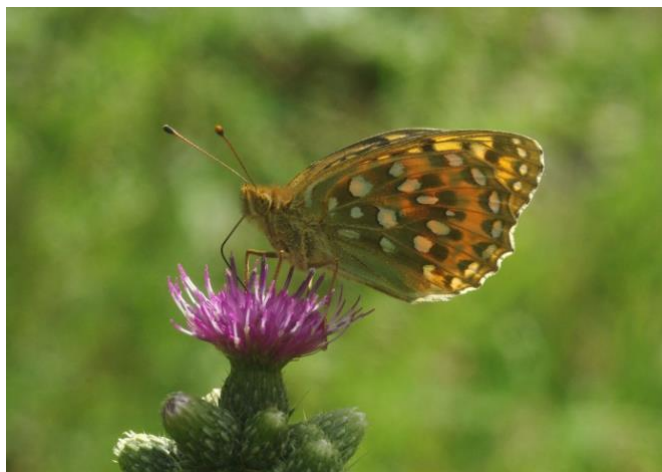
kevinmcgeeandrena@live.co.uk

All images in this article © Kevin McGee

The following noteworthy observations were all recorded on a casual basis during breaks from routine work activities.

BUTTERFLIES (alphabetically).

Dark Green Fritillary. One female was visiting Marsh Thistle flowers in the centre of Wyre Forest on the Shropshire side close to Dowles Brook on 26.06.2016.



01. Dark Green Fritillary on Marsh Thistles at Dowles Brook, Wyre Forest. Kevin McGee.

Dingy Skipper. One was at the western section of Wyre Forest just across the border in Shropshire alongside Dowles Brook on 08.05.2016.



02. Dingy Skipper at Dowles Brook, Wyre Forest. Kevin McGee.

Green Hairstreak. One was at emerging gorse on an area recently cleared of excessive scrub at the Devil's Spittleful on 29.05.2016.

MACRO MOTHS

Red-tipped Clearwing *Synanthedon formicaeformis* (Lep; Sesiidae). Notable B. One was seen briefly at rest on brambles alongside the River Severn at the confluence with the Teme south of Worcester, during very hot weather on 06.06.2016.

COLEOPTERA

Siagonium quadricorne (Col; Staphylinidae). A female was collected from beneath loose bark on a dead elder alongside Dowles Brook on the Shropshire side of Wyre Forest on 09.11.2014.

Velleius dilatatus (Col; Staphylinidae). Endangered. A dead specimen was found inside a house close to Monkwood on 27.09.2016. There are very few records of this spectacular rove beetle from the midlands generally. Also known as the Hornet Rove Beetle, *V. dilatatus* is entirely associated with Hornets' nests where adults and larvae feed on detritus within the nest. Adults have also been recorded feeding nocturnally at sap runs on trees close to hornets' nests. An active hornets' nest was known to be in the roof-space of the house where the specimen was found. This species may be expanding its range in line with the recent range-expansion of hornets.



03. *Velleius dilatatus*. Kevin McGee. A dead specimen that was too dry and brittle to be set. Apologies for the poor photo. Broken flashgun!

Aphodius distinctus (Col; Scarabaeidae). Notable B. One of five was collected from cow dung at Devil's Spittleful on 11.03.2016.



04. *Aphodius distinctus* in cow dung. Kevin McGee.

Gnorimus nobilis (Col; Scarabaeidae). Vulnerable. One was on Meadowsweet flowers at Martley 'Millennium Green' on 21.07.2016.



05. *Gnorimus nobilis* on Meadowsweet. Kevin McGee

Hoplia philanthus (Col; Scarabaeidae). Following my first record of this species from Bringsty Common, Herefordshire, in June 2015 I have encountered it with increasing frequency at several locations in the West Midlands. For example, I counted thirteen as part of a synchronised emergence in rank grassland along an unremarkable section of canal in Bilston, Staffordshire on 16.06.2016 during a general habitat survey for work purposes. I have also found them in grassland at abandoned sports pitches at Rotton Park in Birmingham whilst working (06.07.2015). I eventually found one in Worcestershire at Martley Millennium Green on 07.06.2016, and I have recorded two more there since. One was on Marsh Thistle flowers at Wyre Forest on the Shrops side of Dowles Brook on 03.07.2016. I suspect this species is undergoing an expansion in range.



06. *Hoplia philanthus*. Kevin McGee.

Amara fulva (Col; Carabidae). Notable B. One was collected from sandy ground at Devil's Spittleful on 29.05.2016.



07. *Amara fulva* on a sandy track. Kevin McGee

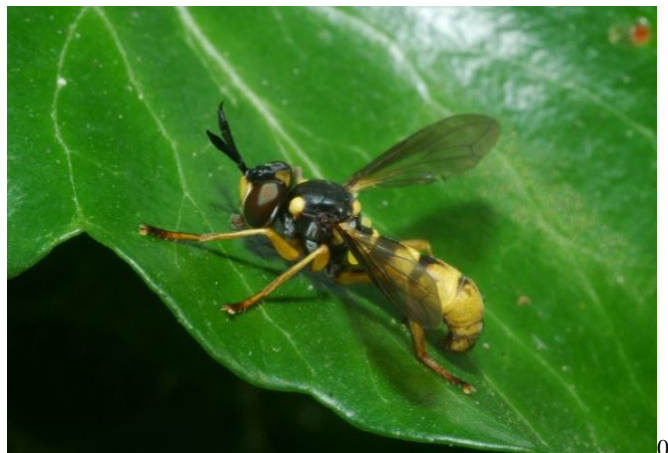
Bembidion punctulatum (Col; Carabidae). One was collected from riverside gravels at Ham Bridge crossing the River Teme between Clifton upon Teme and Martley on 03.06.2016.

DIPTERA (alphabetically).

Criorhina berberina (Dip; Syrphidae). Frequent along a section of abandoned railway line at Shakenhurst during May 2016, and one at Martley church on 07.06.2016.

Criorhina ranunculi (Dip; Syrphidae). Notable B. One at goat willow blossom on the Shrops side of Dowles Brook, Wyre Forest on 09.04.2015. One at Shrawley Wood on 12.05.2016.

Leopoldius signatus (Dip; Conopidae). Notable B. One at flowering ivy at Martley Church on 04.10.2016.



8. *Leopoldius signatus* on Ivy foliage. Kevin McGee.

Neoitamus cyanurus (Dip; Asilidae). One on a dead Scots Pine trunk at the Devil's Spittleful on 29.05.2016 is my first Worcestershire record for this species.



9. *Neoitamus cyanurus*. Kevin McGee.

Oxycera rara (Dip; Stratiomyidae). One was briefly seen on Bramble foliage at Martley Millennium Green on 06.07.2016.

Stratiomys potamida (Dip; Stratiomyidae). Notable B. One was briefly seen on Hogweed flowers at Martley Millennium Green on 23.06.2016.

Tachina ursina (Dip; Tachinidae). Three were present along the disused railway through Wyre Forest on 31.03.2016.

HYMENOPTERA (alphabetically).

Andrena labiata (Hym; Andrenidae). Notable A. Frequently recorded as just one or two females visiting Common Field Speedwell flowers at Martley Millennium Green between 15.05 and 31.05.2016.

Coelioxys inermis (Hym; Megachilidae). One female collected from a low wall of local sandstone alongside Martley Church on 12.08.2016.

Coelioxys rufescens (Hym; Megachilidae). One female collected from a low wall alongside Martley Church on 10.06.2016.



10. *Coelioxys rufescens* at Martley Church. Kevin McGee.

Colletes hederæ (Hym; Colletidae). My first and only Worcesterhire record to date is of one briefly seen on Ivy flowers at Martley church on 04.10.2016. (Editor's note: large numbers of this bee were recorded in Worcestershire in 2016 including several large colonies, mostly in central and south of the county)



1. *Colletes hederæ* photographed on Ivy at St. Austell in Cornwall. Kevin McGee.

Episyrus rufipes (Hym; Pompilidae). A single female was seen at Hartlebury Common on 08.08.2016.

Monosapyga clavicornis (Hym; Sapygidae). Notable B. One on a low wall of local sandstone alongside Martley Church on 13.05.2016.

Nomada fucata (Hym; Apidae). Notable A. A healthy population occurs with large numbers of its host, *Andrena flavipes*, at a low wall of local sandstone alongside Martley Church.

Nomada flavopicta (Hym; Apidae). Notable B. One of two females collected from Ragwort flowers at Martley church on 29.07.2016. This is my first and only record of this scarce species to date.



12. *Nomada flavopicta* on Ragwort flowers at Martley church. Kevin McGee.

Nomada lathburiana (Hym; Apidae). Rare. Several seen at a low wall of local sandstone alongside Martley Church between 21.04.2016 and 06.05.2016. A female was seen at the Devil's Spittleful on 29.05.2016.