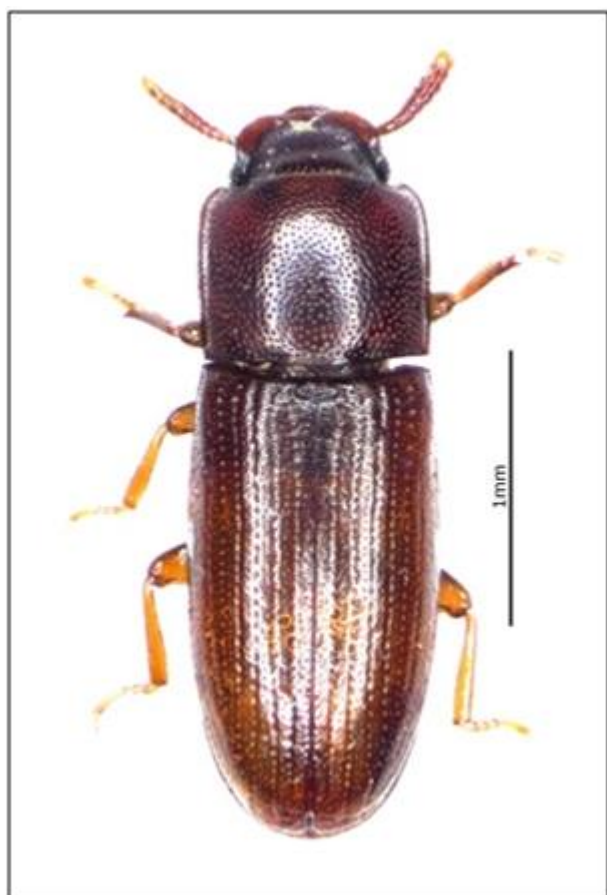


***Palorus subdepressus* (Wollaston, 1864) (Col: Tenebrionidae) new for Worcestershire.**

Kevin McGee
Gardeners Cottage, Shakenhurst, Nr Kidderminster, Worcestershire.
DY14 9AR. kevinmcgeeandrena@live.co.uk

On 14.11.2021 I collected what I believed to be a Tenebrionid beetle *Palorus subdepressus* (Wollaston, 1864) from a decaying but quite dry and crumbly sporophore of the bracket fungus *Ganoderma resinaceum* at the base of a veteran oak tree at Shakenhurst, SO675730. Because there are few records of this beetle in the open, and because there are superficially similar congeners, I asked Paul F. Whitehead to examine it. Paul confirmed my identification and commented that: "This is an interesting record of a species that has been seen increasingly on arboreal fungi but apparently with few recent records." Paul referred me to Alexander & Mann (2004) who recorded 'small numbers' on *G. resinaceum* on two oaks in south Devon on 11.9.2003. Others were taken in a vane trap 4m up the trunk of a Lombardy Poplar tree at Milham Ford School, Oxford during August 2002 by Judy Webb (Alexander & Mann, 2004).



01. *Palorus subdepressus* collected from *Ganoderma resinaceum* on oak at Shakenhurst on 14.11.2021. P.F.Whitehead..

This small reddish brown beetle (2.5-3.0 mm in length), and several related similar species are commonly known as flour beetles as they are frequently associated with flour and other dried products stored indoors. It is therefore interesting that the specimens found in Devon in 2004 were also found in *G. resinaceum* sporophores on oak.

This is believed to be the first record of this species in the open in Worcestershire.



02. *Ganoderma resinaceum* on a veteran oak at Shakenhurst. K.McGee.

References

Alexander, K.N.A. & Mann, D.J. 2004. *Palorus subdepressus* (Wollaston) (Tenebrionidae: Palorinae) in the wild in Oxfordshire and south Devon. *The Coleopterist* **13**(4): 141.
NBN Atlas *Species search* [on-line] <http://www.nbnatlas.org/> [accessed 10.12.2021].

Acknowledgements

With thanks to Paul F. Whitehead for confirming the identity of the beetle and for his continuing expertise and guidance.

Images.

- 01. *Palorus subdepressus* collected from *Ganoderma resinaceum* on an oak tree at Shakenhurst on 14.11.2021. P. F. Whitehead.
- 02. *Ganoderma resinaceum* on a veteran oak tree at Shakenhurst.K. McGee.