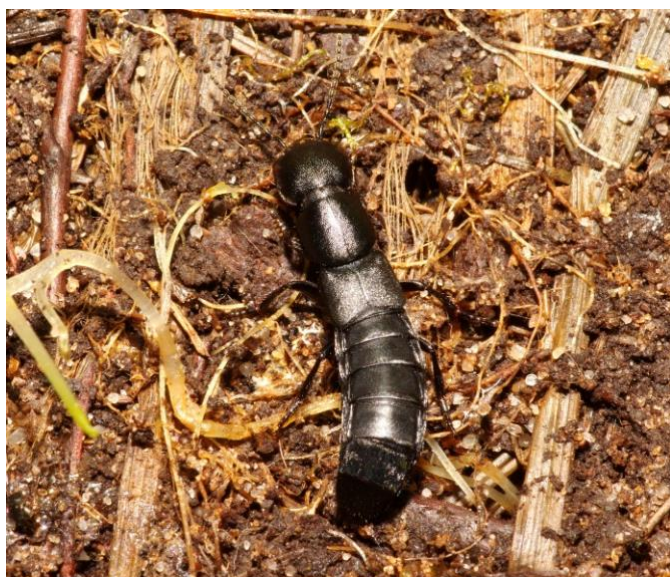


***Ocypus nitens* (Schrank, 1781) (Col: Staphylinidae)  
at the Devil's Spittleful, Kidderminster.**

Kevin McGee. Gardeners Cottage, Shakenhurst, Nr Kidderminster,  
Worcestershire. DY14 9AR  
[kevinmcgeeandrena@live.co.uk](mailto:kevinmcgeeandrena@live.co.uk)

A large black rove beetle 20mm in length was collected from underneath a birch log at the Devil's Spittleful on 26.4.2018 (01, 02, 03). I later keyed the beetle out as *Ocypus nitens* but on learning of its rarity during on-line research I thought it best to seek a second opinion. I posted the specimen to Paul Whitehead who confirmed that it is indeed *O. nitens* and to the best of his knowledge is the first record from this region.

The beetle is listed as scarce (Notable A). The distribution map on the NBN Atlas web-site reveals 76 records from widely-scattered locations throughout much of England and Wales except for the midlands; although there is a slight bias towards the southern and eastern coastal areas of England. On the European continent, particularly towards the western Mediterranean, the beetle is associated with thermo-xeric short-grassland communities. It will be interesting to see if further records are ever established from similar heathland habitats around the Kidderminster area generally. Any large black rove beetle from dry sandy sites appearing superficially like a slimmed-down version of *Ocypus olens* (the Devil's coach-horse) should be collected for identification.

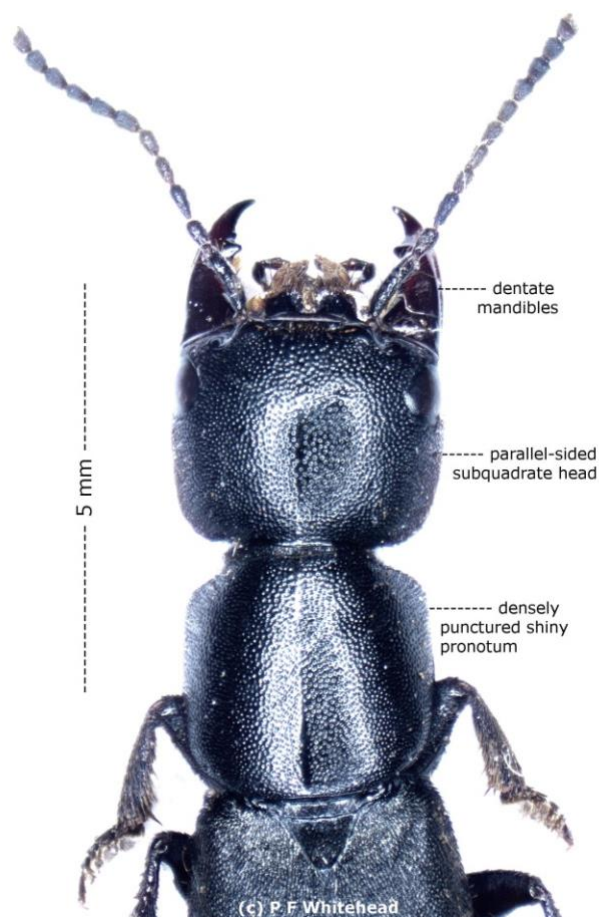


01. *Ocypus nitens* underneath a birch log at Devil's Spittleful on 26.04.2018. K.McGee.

(Editor's note. The Worcestershire Biological Records Centre database contains one other Worcestershire record from Brotheridge Green at SO814431 in 1977).



02. *Ocypus nitens* from underneath a birch log at the Devil's Spittleful on 26.04.2018. K.McGee.



03. *Ocypus nitens*, details of the main features. Image kindly prepared by P.F.Whitehead., and reproduced here with his permission.

**References**

NBN Atlas. 2018. *Species search* [on-line] <http://nbnatlas.org/>  
Accessed 10.5.2018.  
Lott, D. A. & Anderson, R. 2011. *Handbooks for the identification of British Insects. Vol. 12. Part 7. The Staphylinidae (rove beetles) of Britain and Ireland.* Royal Entomological Society, St.Albans,.