

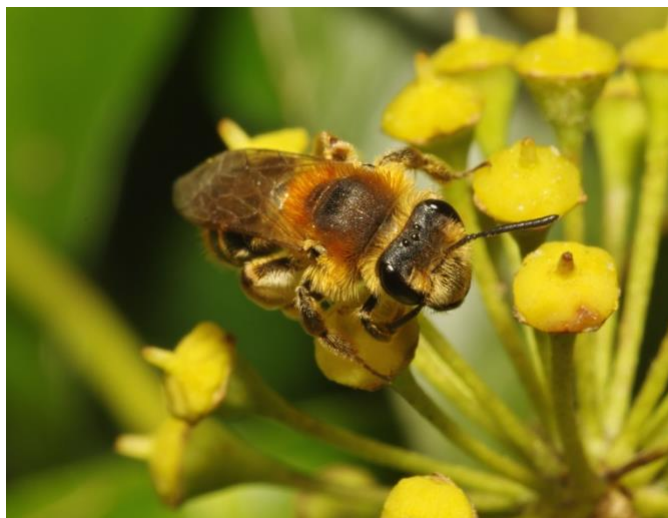
***Andrena congruens* Schmiedeknecht, 1883 (Hym: Andrenidae) at Martley, Worcestershire.**

Kevin McGee. Gardeners Cottage, Shakenhurst, Nr Kidderminster, Worcestershire. DY14 9AR  
[kevinmcgeeandrena@live.co.uk](mailto:kevinmcgeeandrena@live.co.uk)

A single female of *Andrena congruens* Schmiedeknecht was collected from ivy flowers at St. Peters church yard, Martley, on 24.10.2018. This bee is listed as Nationally Notable A (NBN Atlas, 2018).



01. *Andrena congruens* female on ivy at Martley. 24.10.2018. © K.McGee.



02. *Andrena congruens* female on ivy at Martley. 24.10.2018. © K.McGee

During a fine spell of warm sunny weather on 24.10.2018 two *Andrena* mining bee species were observed visiting a few remaining ivy flowers at St. Peters churchyard in Martley.

Ivy flowers are a well-known attraction for nectar seeking insects during the late summer/autumn period, however, by the end of October most of the ivy flowers have gone over and bees, other than bumble bee species, are generally rarely encountered. The two late-flying *Andrena* species I observed were *Andrena cineraria* (a male and female), and what I initially thought was *Andrena wilkella* (female). I photographed the latter and managed to collect it for microscopic examination, the group of *Andrena* bees containing *wilkella* and related species are difficult to identify. I followed the keys using Falk & Lewington (2015) and arrived at the couplet

where the surface of the hind tibia is either a 'clear orange' or 'dark'. My specimen has 'dull orange' hind tibia so the couplet I followed led to the likelihood that I had collected a female *A. wilkella*. Because it was such a late date I emailed my interesting observations to Steven Falk, along with a couple of images. He replied suggesting that my images may actually be of *Andrena congruens* and to check the specimen again. I followed the keys a second time and decided the hind tibia were not 'a clear orange' but rather a 'dull' orange so I followed the 'dark' option in the couplet, the identification process then led perfectly to *A. congruens*; particularly when comparing details on Steven Falk's flickr website (such as the length of the dorsal hair fringe on the hind tibia giving rise to the common name of 'Long-fringed Mining Bee').

This is a scarce species with most records from the southern counties of England and south Wales.

**Acknowledgements**

Grateful thanks to Steven Falk for alerting me to the possibility my photos were of *Andrena congruens*.

**References**

Falk, S. & Lewington, R. 2015. *Field Guide to the Bees of Great Britain and Ireland*. Bloomsbury Publishing plc.

NBN Atlas Species search [on-line] <http://www.nbnatlas.org/> [Accessed 30.10.2018]

**Images**

01. *Andrena congruens* female on ivy at Martley. 24.10.2018. © K.McGee.

02. *Andrena congruens* female on ivy at Martley. 24.10.2018. © K.McGee