

Plate 1: Typical flora of the liassic clay meadows in south and east Worcestershire (Forest of Feckenham – southeast)



Dwarf Thistle *Cirsium acaule*. M. Liley.



Dwarf thistle *Cirsium acaule*. G. Farmer.



Hoary Plantain *Plantago media*. M. Liley



Hoary Plantain *Plantago media*. G. H. Green



Dropwort *Filipendula vulgaris*. M. Liley



Dropwort *Filipendula vulgaris*. G. H. Green



Salad burnet *Sanguisorba minor*. M. Liley



Salad burnet *Sanguisorba minor*. W. Carter



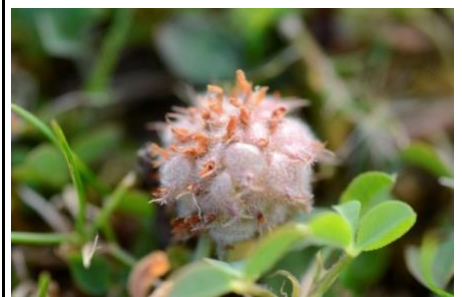
Narrow-leaved Bird's-foot trefoil *Lotus glaber*.



Spiny Restharrow *Ononis spinosa*. M. Liley



Spiny Restharrow *Ononis spinosa*. G. H. Green



Strawberry Clover *Trifolium fragiferum*. J. Bingham



Pimpinella saxifraga *Pimpinella saxifraga*.
M Liley.



Quaking Grass *Briza media*. W. Carter.



Pyramidal Orchid *Anacamptis pyramidalis*.
G. H. Green



Pimpinella saxifraga *Pimpinella saxifraga*.
G. H. Green



Upright Brome *Bromopsis erecta*.



Pyramidal Orchid *Anacamptis pyramidalis*.
G. H. Green



Quaking Grass *Briza media*. S. Bloomfield



Cowslip *Primula veris*. M Liley



Cowslip *Primula veris*. G. H. Green

Plate 2: Typical flora of the mudstone meadows in central and east Worcestershire (Forest of Feckenham – Hanbury - Bentley area)



Devil's-bit Scabious *Succisa pratensis*. G. H. Green.



Devil's-bit Scabious *Succisa pratensis*. . G. H. Green.



Betony *Stachys officinalis*. M. Liley.



Betony *Stachys officinalis*. R. Winnall.



Tormentil *Potentilla erecta*. R. Winnall



Saw-wort *Serratula tinctoria*. G.H. Green.



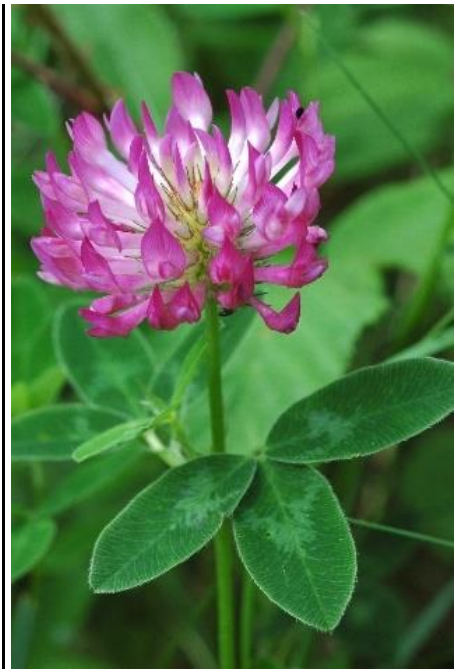
Saw-wort *Serratula tinctoria*. . G.H. Green.



Pignut *Conopodium majus*



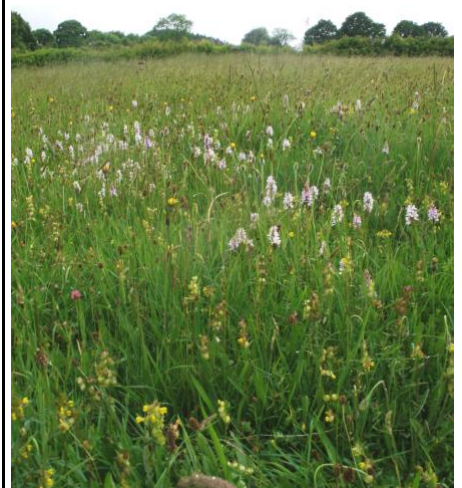
Pignut *Conopodium majus*. R. Winnall.



Zig-zag clover *Trifolium medium*. J. Bingham



Common Spotted orchid *Dactylorhiza fuchsii* and **Fragrant Orchid** *Gymnadenia densiflora* (Eades Meadow).G. H. Green.



Common Spotted Orchid *Dactylorhiza fuchsia*. M. Liley.