

Some invertebrate records of interest, Worcestershire 2015.

John & Denise Bingham

Melecta albifrons (Forster, 1771) Hymenoptera: Apodidea. (01). This unmistakable bee appeared in our garden in Kidderminster on 3 May 2015. The head and body are entirely black except for a pair of lateral patches of white appressed hairs on most of the gastral tergites. We normally record dozens of the early spring bee *Anthophora plumipes*, the host species for *Melecta*, but this is the first time *Melecta* has been recorded. It is usually it is rather scarce in Worcestershire but has been found at several local sites in 2015.



01. *Melecta albifrons*. John Bingham.

Xylophagus ater (Meigen 1804) Diptera: Xylophagidae. Common Awl-fly. (02).

Recorded from both Wyre Forest and Shrawley Wood in 2015. Normally only rarely seen, several sightings were made in 2015 including a mating pair on 7th May on a Beech trunk at Earnwood Copse, Shropshire in Wyre Forest. All records were made by finding the fly resting on tree trunks. At Shrawley Wood on 11th May several were seen on Small-leaved Lime trunks.



02. *Xylophagus ater*. John Bingham.

Stenostola dubia (Laicharting 1784). Coleoptera: Cerambycidae. Lime Longhorn Beetle. (03).

Not that uncommon a beetle but despite many visits to Shrawley Wood we failed to find this insect. Our luck changed in 2015 when numerous specimens were discovered over a period of several weeks. The prime habitat appears to be recently coppice small-leaved lime where the beetle rests on leaves in full sunlight. Beetles were seen from 11th May until 6th June but no doubt this is a minimum time frame to find them. Given the amount of lime trees in Worcestershire this may be much more common than records suggest.



03. *Stenostola dubia*. John Bingham.

Trachys minuta (Linnaeus, 1758). Coleoptera: Buprestidae. RDB Near Threatened

This uncommon species had a bumper year at Shrawley Wood with records throughout the spring and into late summer, suggesting it has at least two broods every year. It was found most often basking on Small-leaved Lime leaves in areas of recent coppice. Its larvae typically develop in willows/sallows, but perhaps Small-leaved Lime can be used? (Levey 1977). Sometimes dozens were found in a casual search lasting no more than a few minutes.

Dichomeris ustalella (Fabricius, 1794) Lepidoptera. Red List (pre 1994) – Endangered. (04).

Found by Worcestershire Recorders on the field meeting at Shrawley Wood on 6 June 2015. This is a very rare and local moth. The larvae feed on Small-leaved Lime so perhaps it may occur in other nearby woodlands in the Severn Valley.



04. *Dichomeris ustalella*. John Bingham.

Zophomyia temula (Scopoli, 1763) Diptera: Tachinidae Nationally Notable. (05).

Found in Shrawley Wood on 6 June 2015. A southern species with several records from Worcestershire. A parasitoid species of fly but the host species is not known (Belshaw 1993). Moth larvae have been cited as the host by some species.



05. *Zophomyia temula*. John Bingham.

Glischrochilus quadriguttatus (Fabricius, 1776) Coleoptera: Nitidulidae. (06).
 Found by John Bingham under bark on a damaged oak tree in Wyre Forest, Longdon Orchard on 8 June 2015. The common name is the Four-spotted Sap Beetle. Not uncommon but needs to be searched for on sap runs or damaged trees.



06. *Glischrochilus quadriguttatus*. John Bingham.

Melasis buprestoides (Linnaeus, 1761). Coleoptera: Eucnemidae. False Click Beetle. (07).
 An uncommon (Nationally Scarce B) but widely distributed saproxylic beetle found in the Shropshire part of Wyre Forest at Longdon on 5 June 2015. The larva develops in hard dead timber, especially boughs on a wide variety of broadleaves, in this case it was found on a oak damaged by a fire (Alexander 2002). I also found it again in Shropshire at Dudmaston Estate a few days later on 7 June, some 11 kilometres to the north along the River Severn valley, flying around an old damaged beech tree.



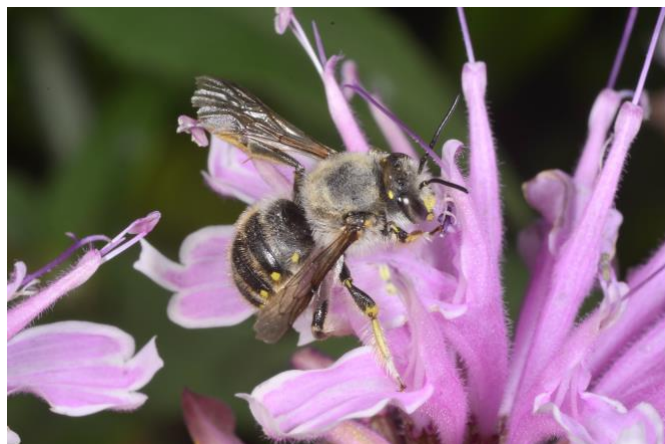
07. *Melasis buprestoides*. John Bingham.

Tenthredo amoena (Gravenhorst, 1807) Hymenoptera: Tenthredinidae. (08).
 An uncommon southern species with most records on NBN Gateway from the Wiltshire area. Records are also shown in north Worcestershire and a mating pair was photographed in Shrawley Wood on 21 July 2015. The larvae are said to feed on *Hypericum perforatum*: they are grey with yellow marks and black spots. We have yet to find them although the food plant is present.



08. *Tenthredo amoena*. John Bingham.

Anthidium manicatum (Linnaeus, 1758) Hymenoptera; Megachilidae. Wool-carder Bee. (09).
 Several sightings of this bee were made in 2015 in Worcestershire. We were surprised when it appeared in our garden in Kidderminster on 9 August 2015. Despite looking in previous years this was the first time we found this bee. It showed a liking for nectar on Bergamot *Monarda didyma*. Further *Anthidium* bees were recorded in the garden over a period of a few days.



09. *Anthidium manicatum*. John Bingham.

Lasius umbratus (Nylander, 1846) Hymenoptera: Formicidae. (10)
 On 15 September Denise Bingham found a small light brown ant under a *Cistus* bush in our garden in Kidderminster. We identified it as *Lasius umbratus*, a scarce ant in Worcestershire but probably under-recorded. A specimen was shown to Geoff Trevis who kindly confirmed our identification. *Lasius umbratus* is a parasitic ant. Queens seek out a *Lasius niger* nest to take over using the scent of the host ant to gain access.



10. *Lasius umbratus*. John Bingham.

Sabacon viscayanum subsp. *ramblaianum* (Martens, 1983) Araneae. (11).

Found by Nicki Farmer and reported by Winnall & Farmer (2013) in *Worcestershire Record* number 35, being found in the Staffordshire Vice County portion of Wyre Forest. On 11 August 2015 on a night time foray into Wyre John Bingham found a harvestman crossing the forest track at Longdon Orchard in the Shropshire portion of Wyre. It was later identified as *Sabacon*. This record is only a few hundred metres from the Worcestershire boundary so we are hopeful of a Worcestershire record very soon!



11. *Sabacon viscayanum ramblaianum* (poor specimen). John Bingham.

References.

- Alexander, K.N.A. 2002. *The invertebrates of living and decaying timber in Britain and Ireland – a provisional annotated checklist*. English Nature Research Reports, No. 467.
- Belshaw, R. 1993 Tachinid flies. Diptera: Tachinidae. *Handbooks for the identification of British Insects*. 10, Part 4a(i). Royal Entomological Society of London
- Levey, B. 1977. Coleoptera: Buprestidae. *Handbooks for the identification of British insects*, vol. 5, part 1 (b). Royal Entomological Society of London.
- Winnall, R. & Farmer, N. 2013. A new harvestman in the Wyre Forest. *Sabacon viscayanum* subsp. *ramblaianum* (Martens, 1983). *Worcestershire Record* 35:16-17.

Images

01. *Melecta albifrons*. John Bingham.
02. *Xylophagus ater*. John Bingham..
03. *Stenostola dubia*. John Bingham.
04. *Dichomeris ustalella*. John Bingham.
05. *Zophomyia temula*. John Bingham.
06. *Glischrochilus quadriguttatus*. John Bingham.
07. *Melasis buprestoides*. John Bingham.
08. *Tenthredo amoena*. John Bingham.
09. *Anthidium manicatum*. John Bingham.

10. *Lasius umbratus*. John Bingham.

11. *Sabacon viscayanum ramblaianum* (poor specimen). John Bingham.